

Cat Sample Collection Instructions



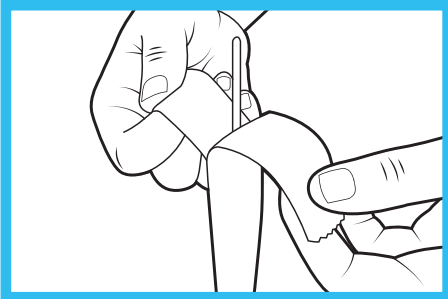
Read ALL steps before collecting samples!

Important: Please activate your CatKit online at basepaws.com.

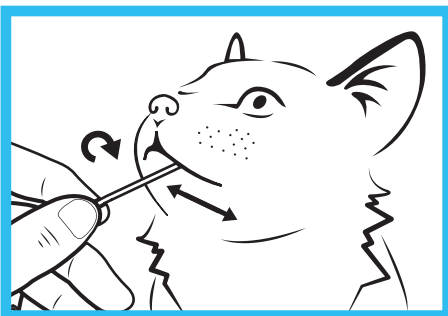
- Animal should not eat or drink 1 hour before collecting the sample.
- Do not touch swab tip or allow contact with any other object or animal.
- You will be using the included swab and BOTH adhesive strips.

Kit Contents:

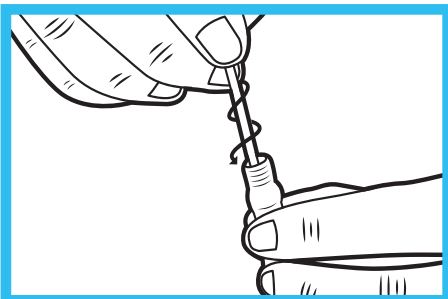
- 1 swab
- iSWAB sample collection device
- Plastic "biohazard" bag with absorbent pad
- "Exempt Animal Specimen" label
- Outer box to mail sample
- 2 adhesive strips on a folded card



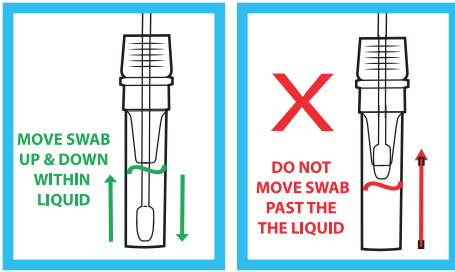
- 1 TO COLLECT AN ORAL SAMPLE:** Place vial standing up on flat surface. Peel open bag and remove the swab. Unscrew vial cap.



- 2** Rub swab tip firmly against the inside of the cheek 15-20 times, using light pressure similar to brushing your teeth. Rotate swab tip during collection.



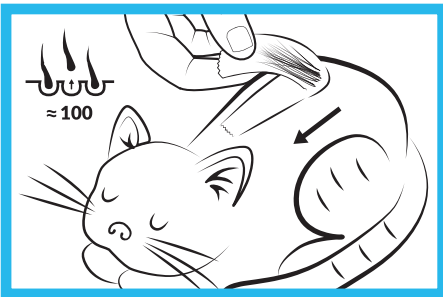
- 3** Pick up vial and hold steady in one hand. Slowly twist swab into vial with a corkscrew motion. There will be resistance, but push the swab all the way to the bottom of tube.



Powered by iSWAB technology

- 4 Hold vial steady and move swab up and down rapidly inside the tube 10-15 times without moving the swab out of the liquid.

- 5 Hold vial firmly and remove the swab by slowly twisting out with a corkscrew motion. At this point remove and discard the swab. **DO NOT PLACE SWAB IN THE BIOHAZARD BAG.**
- 6 Replace cap tightly and place vial in Biohazard bag. Place Biohazard bag with vial back in the box.



- 7 **TO COLLECT HAIR:** Carefully peel “Adhesive 1” from the card and place on one animal.
- 8 Pet the animal on top of the tape to ensure the tape is smooth. Let adhesive sit for two minutes.
- 9 Gently remove adhesive, **pulling against the direction of the hair growth.** The adhesive should be covered with hair (100+ hairs).
- 10 Repeat steps with “Adhesive 2”. Face the sticky surface of both adhesives facing each other and slide into box provided.
- 11 **SHIPPING:** Place a return address label on top of the box over the original label. Shipping is free for US customers; International customers pay for return shipping. If shipping multiple CatKits, use the envelope provided.
- 12 Place the “Exempt Animal Specimen” label on the bottom left, so it is not covering the postage or return address label.
- 13 Peel the tape strip from under the top flap and re-seal the box.

THANK YOU!